

**Typical Two
Bedroom Hybrid**

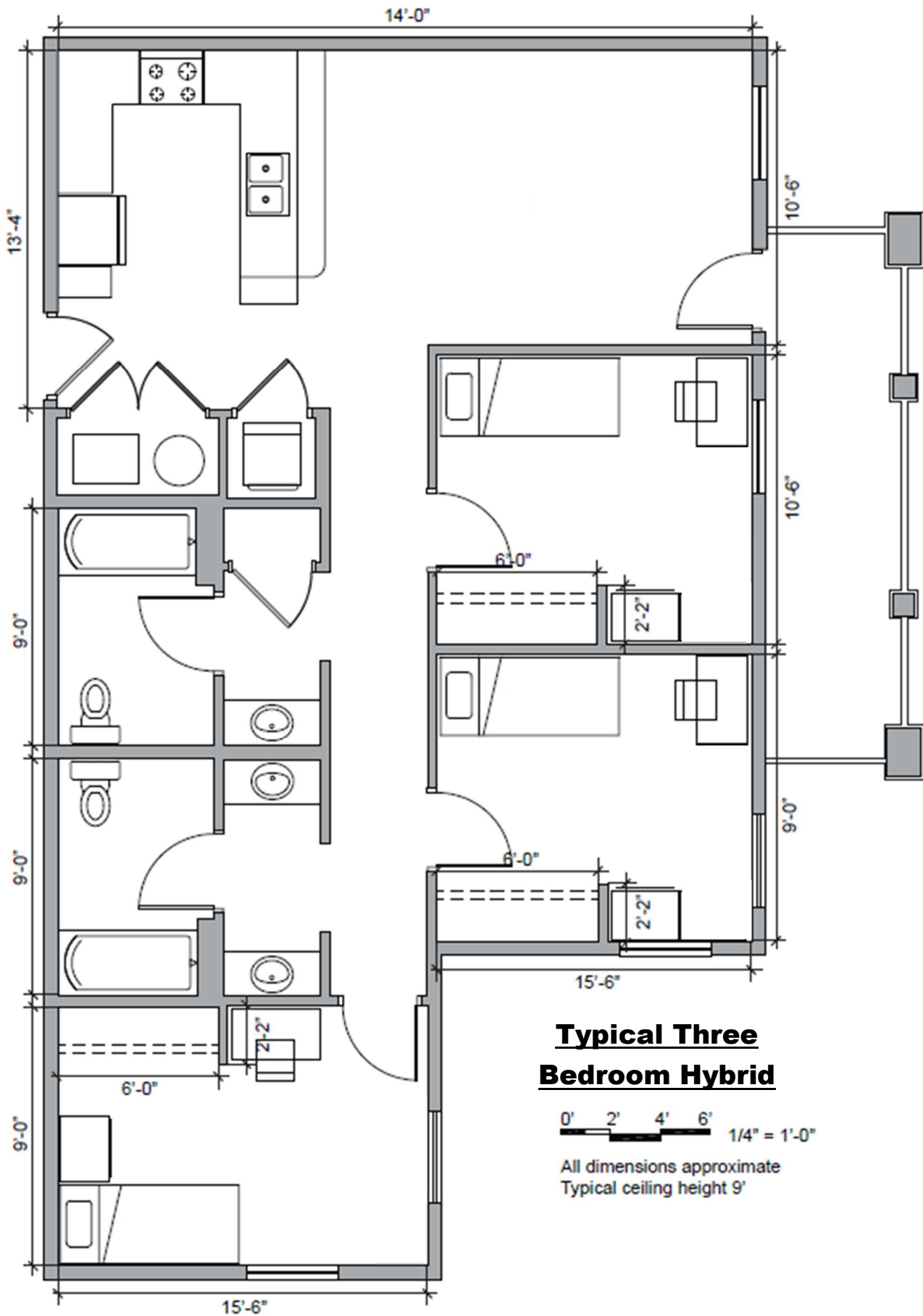


All dimensions approximate
Typical ceiling height 9'

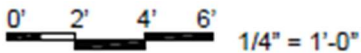
Twin XL Bed: Loftable Frame 6'-9"L x 3'-2"W, Adjustable Height 1'-0" to 5'-2"

Desk: 3'-6"L x 2'-0"W x 2'-6"H

Dresser: 2'-6"L x 2'-0"W x 2'-6"H,
Drawers 2'-2"L x 1'-8"W x 0'-6"H



**Typical Three
Bedroom Hybrid**



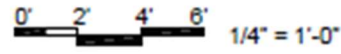
All dimensions approximate
Typical ceiling height 9'

Twin XL Bed: Loftable Frame
6'-9"L x 3'-2"W, Adjustable Height
1'-0" to 5'-2"

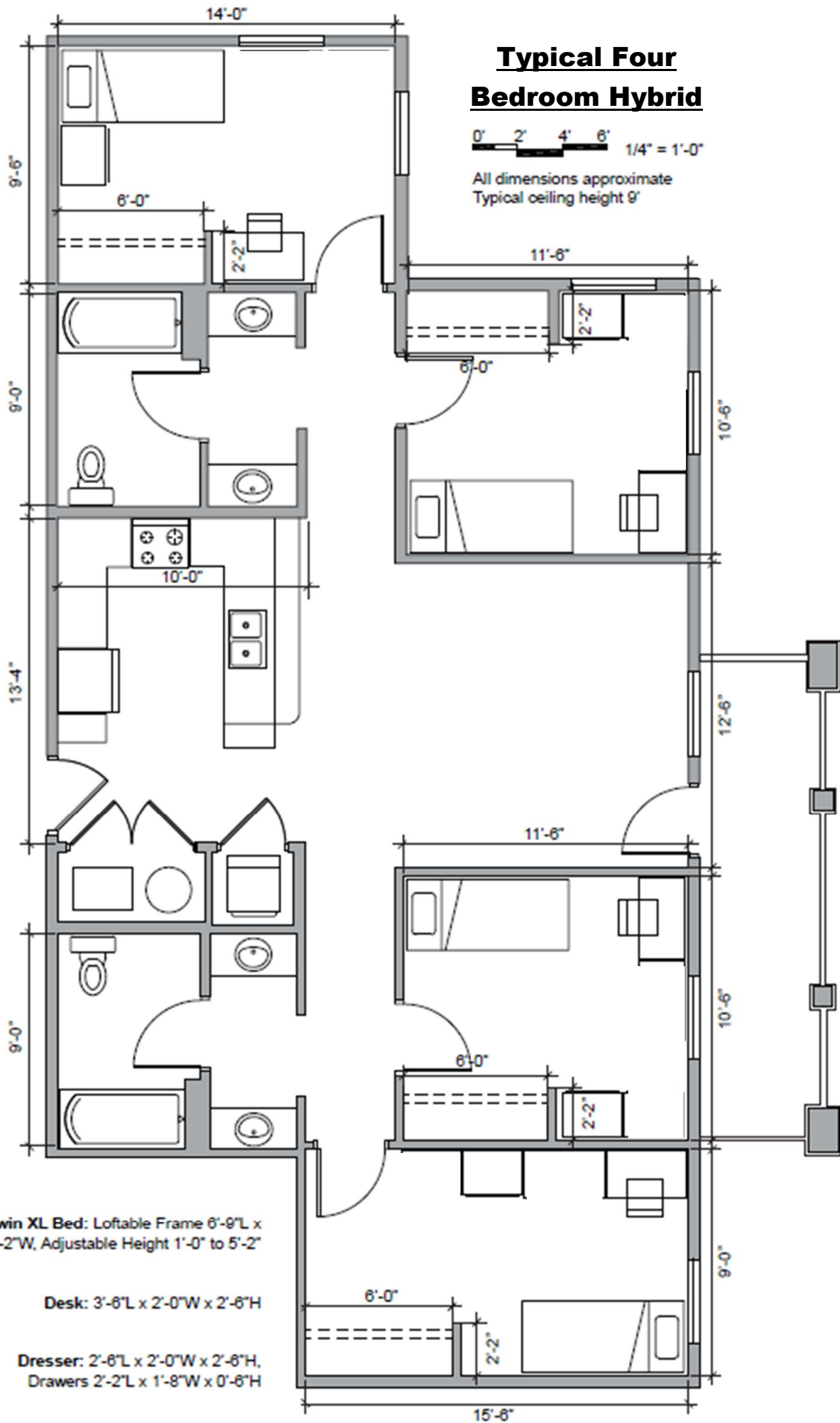
Desk: 3'-6"L x 2'-0"W x 2'-6"H

Dresser: 2'-6"L x 2'-0"W x 2'-6"H,
Drawers 2'-2"L x 1'-8"W x 0'-6"H

Typical Four Bedroom Hybrid



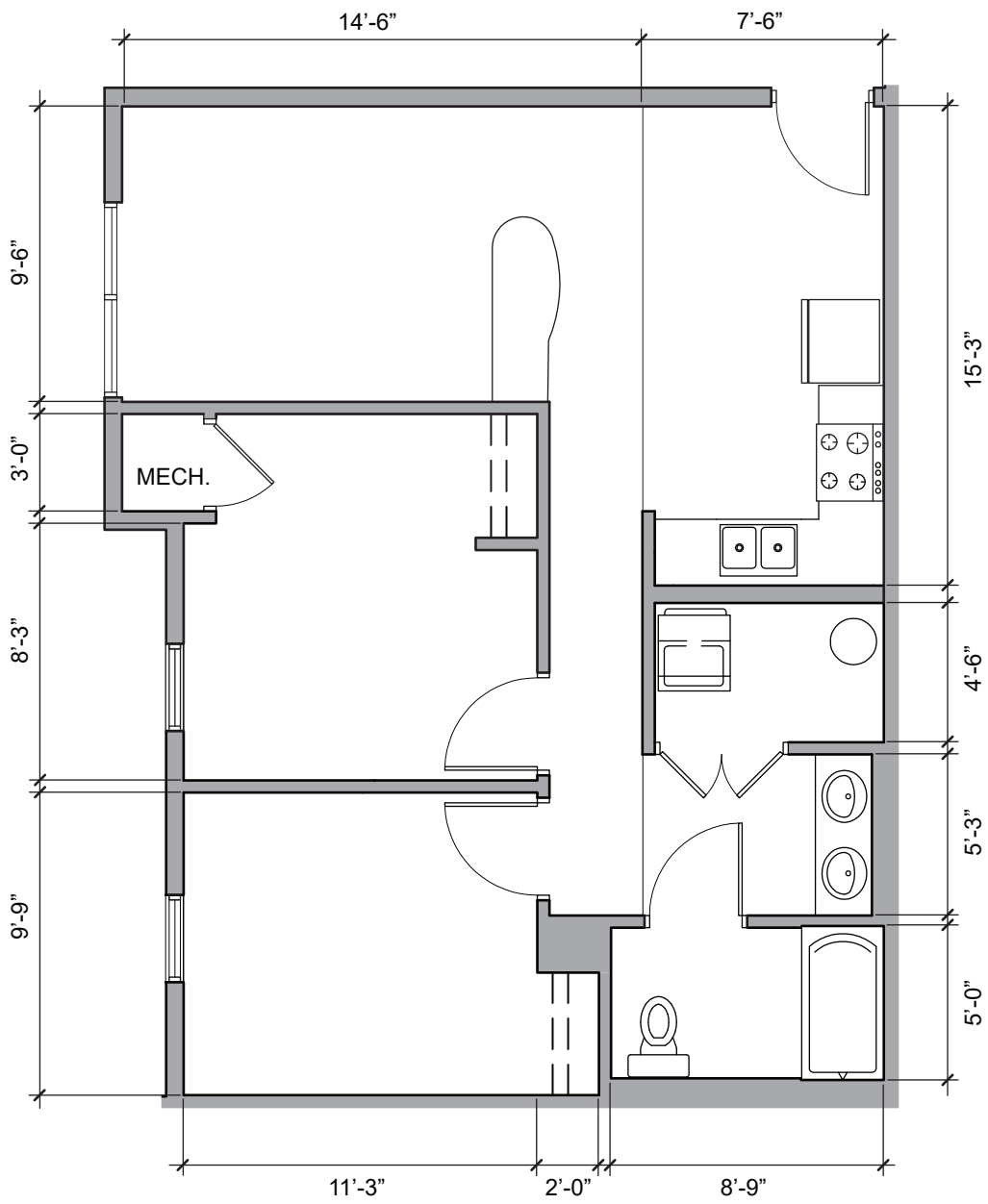
All dimensions approximate
Typical ceiling height 9'



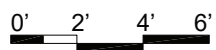
Twin XL Bed: Loftable Frame 6'-8"L x 3'-2"W, Adjustable Height 1'-0" to 5'-2"

Desk: 3'-6"L x 2'-0"W x 2'-6"H

Dresser: 2'-6"L x 2'-0"W x 2'-6"H,
Drawers 2'-2"L x 1'-8"W x 0'-6"H

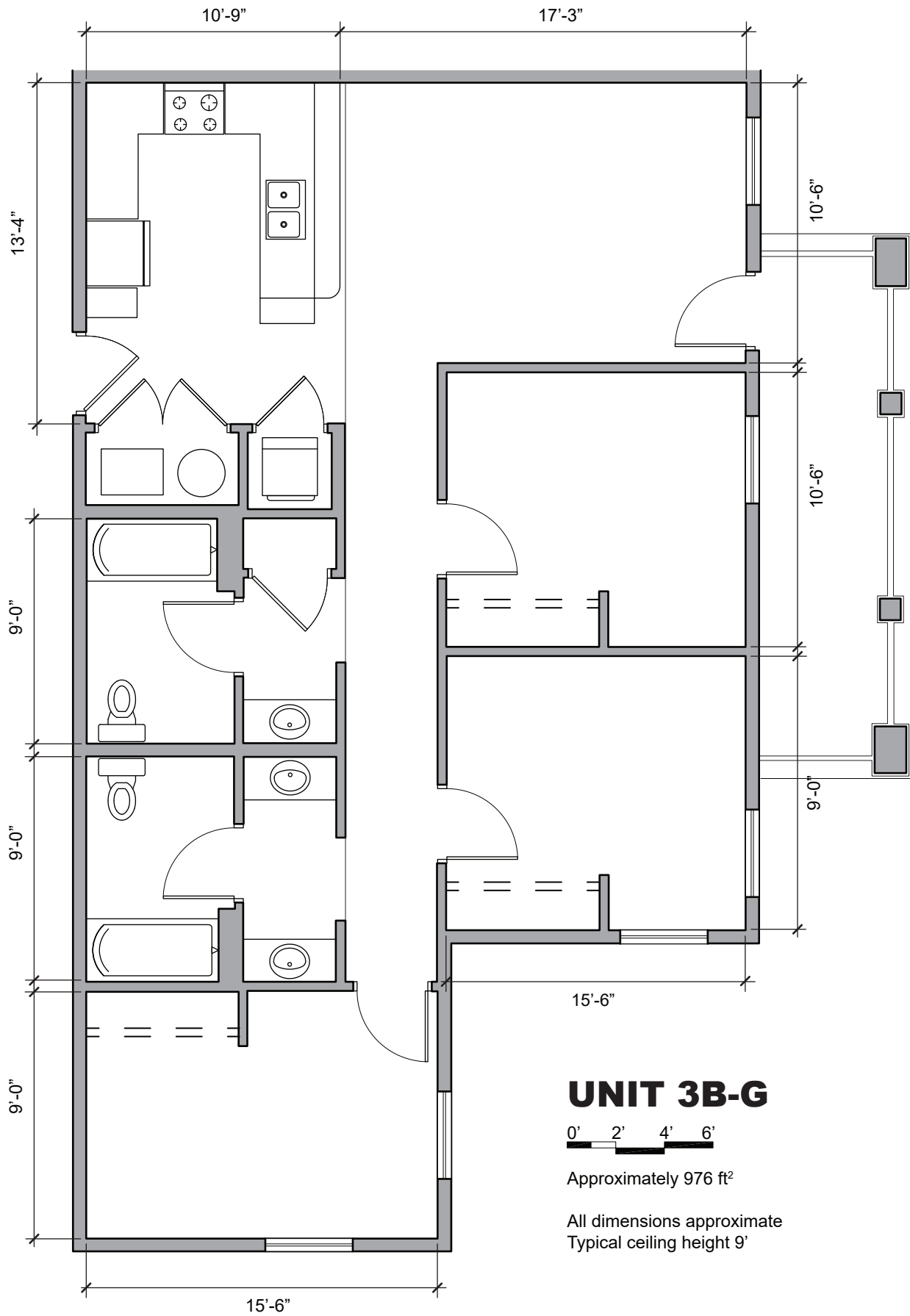


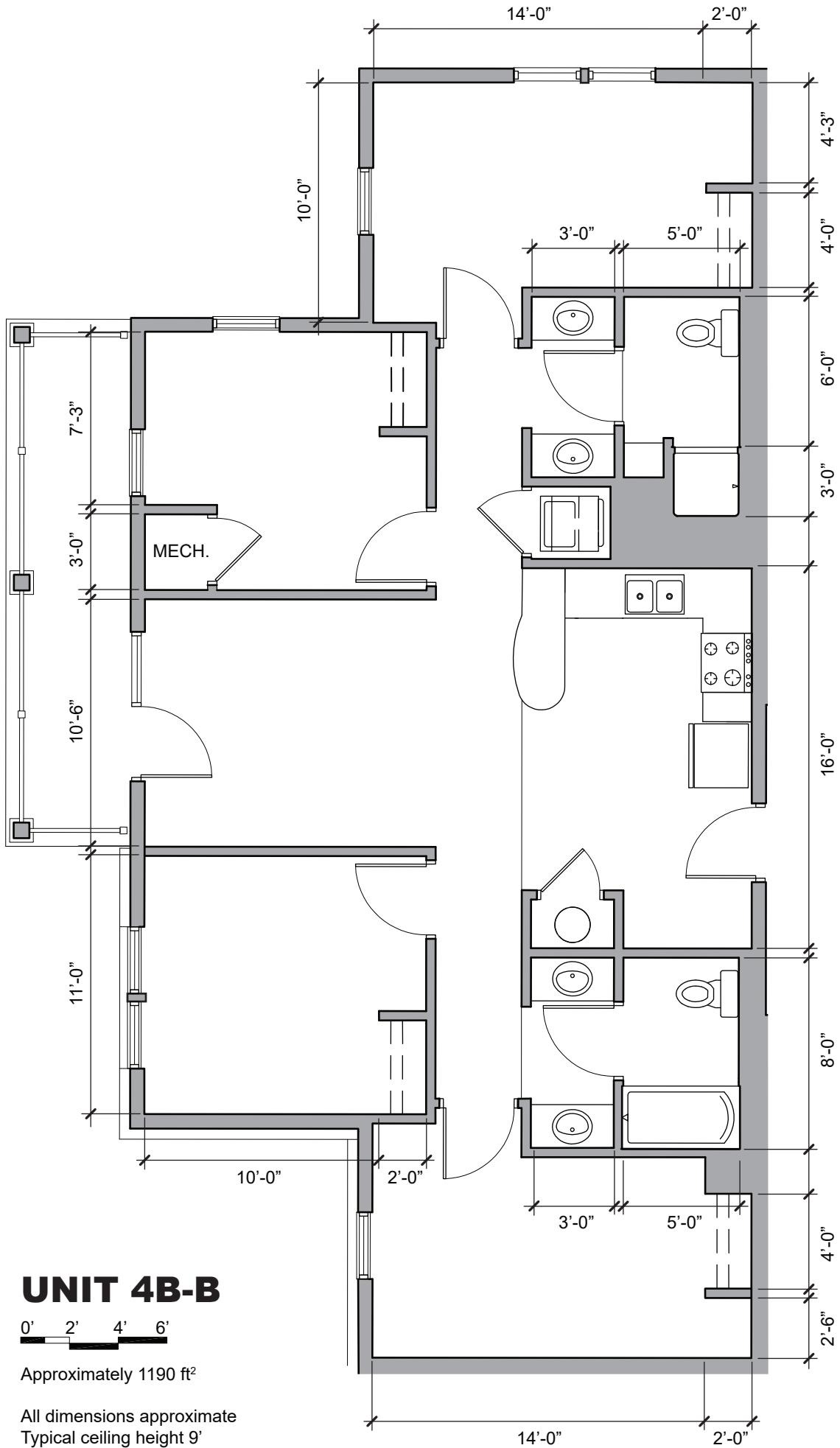
UNIT 2B-C



Approximately 731 ft²

All dimensions approximate
Typical ceiling height 9'





UNIT 4B-B



Approximately 1190 ft²

All dimensions approximate
Typical ceiling height 9'